



CASA | ACSA

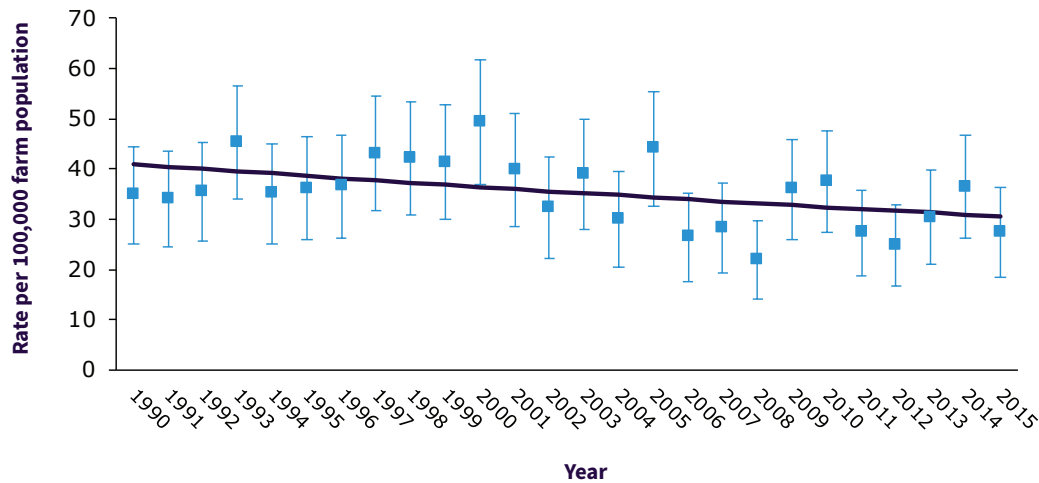
Canadian Agricultural Injury Reporting  
Surveillance des blessures agricoles au Canada

**SENIORS (60+ YEARS)**

# Agriculture-Related Fatalities

2006 – 2015

## AGRICULTURE-RELATED FATALITY RATE BY YEAR, 1990–2015



Over the 26 year period the agriculture-related fatality rate for older farmers had a statistically significant average annual decrease of 1.2% each year.

## AGRICULTURE-RELATED FATALITY NUMBERS BY AGE GROUP AND SEX, 2006–2015



	60-69 yrs	70-79 yrs	80+ yrs	Total	%
<b>Males</b> <span style="color: #2c3e50;">■</span>	154	125	64	343	96
<b>Females</b> <span style="color: #0072bc;">■</span>	6	8	1	15	4
<b>Total</b>	160	133	65	358	100
<b>Percent of all senior farmer fatalities</b>	45	37	18	100	
<b>Age specific rate per 100,000 farm population</b> <span style="color: #f1c40f;">●</span>	52.1	34.6	13.4	30.4	

Ninety-six percent of the agriculture-related older adult fatalities were male. Farmers 60 to 69 years of age had the highest number of fatalities and the highest rate with 160 fatalities and a rate of 52.1 fatalities per 100,000 farm population.

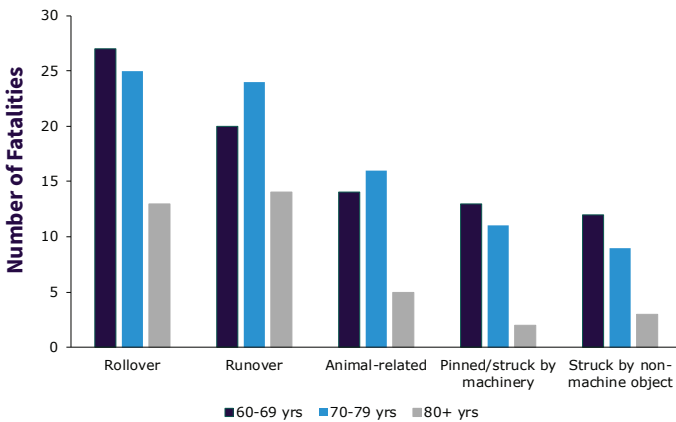
Between 2006 and 2015 there were 358 agriculture-related fatalities of older farmers (60+ yrs) in Canada. The leading 5 mechanisms of injury accounted for 58% of all fatalities.

**LEADING CAUSES OF FATALITY:**

MECHANISM	# OF FATALITIES	%
Rollover	65	18%
Runover	58	16%
Animal-related	35	10%
Pinned/struck by machinery	26	7%
Struck by non-machine	24	7%
Other mechanisms	150	42%
Total	358	100%

## AGRICULTURE-RELATED FATALITY NUMBER AND RATE BY AGE GROUP AND MECHANISM, 2006-2015

### NUMBER OF FATALITIES, 2006-2015

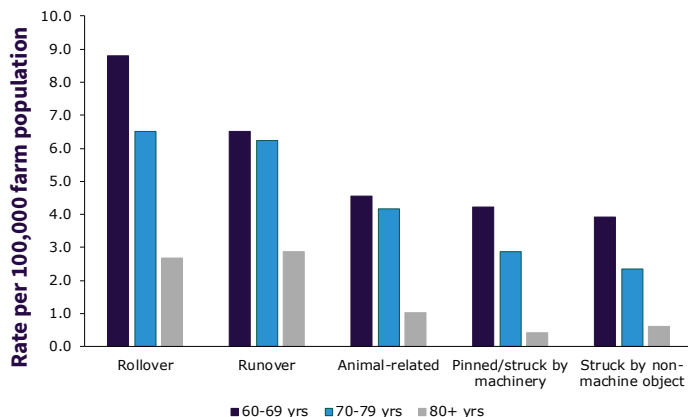


Farmers 60 to 69 years of age had the highest number of fatalities in 3 of the 5 leading causes. They had the highest number of fatalities due to rollovers, being pinned/struck by machinery, and being struck by a non-machine object.

Farmers 70 to 79 years of age had the highest number of fatalities due to runovers and animal-related fatalities.

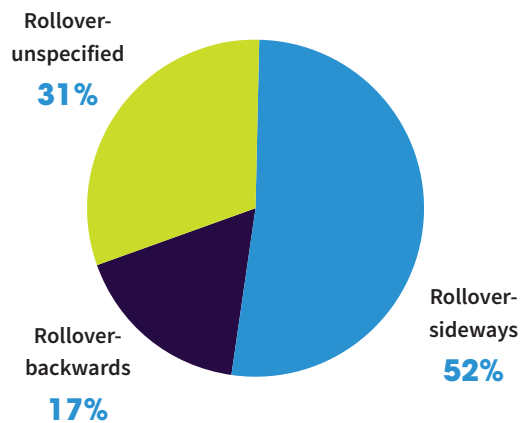
However, when the farm population is considered, farmers between 60 and 69 years of age had the highest fatality rates for each of the leading causes.

### RATE OF FATALITIES, 2006-2015



## ROLLOVER FATALITIES, 2006–2015

---

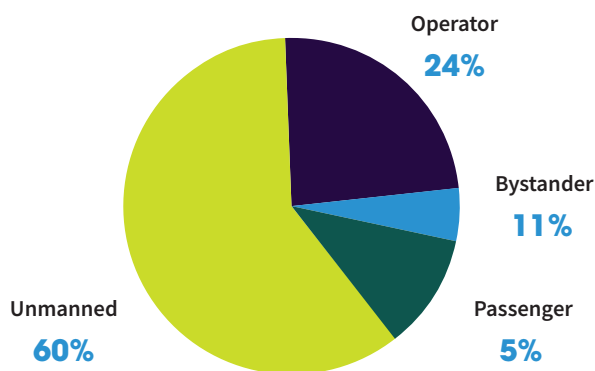


Of the 65 rollover fatalities, just over half (52%) were sideways (34 fatalities), 17% were backwards (11 fatalities) and 31% (20 fatalities) the direction of the rollover could not be determined or was not documented.

- Of the 65 rollover fatalities, the majority, 77% (50 fatalities) involved a tractor. Rollover fatalities involving an ATV accounted for an additional 15% (10 fatalities).
- In almost 2 out of every 3 rollover fatalities (63%, 35 fatalities) the deceased was either too close to an edge or was on an incline.
- In fatal machine rollovers, injury circumstance text descriptions showed that the decedents' most common activity prior to the rollover was driving involving transportation, accounting for 23%, 12 fatalities.

## RUNOVER FATALITIES, 2006–2015

---

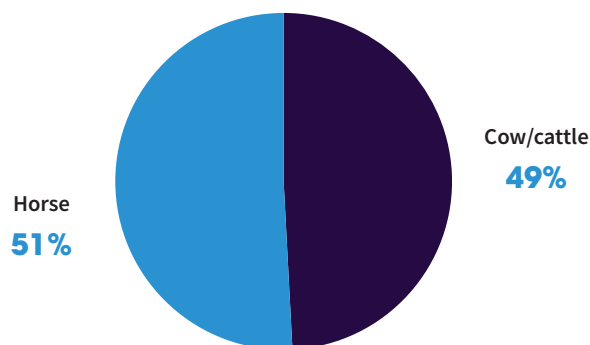


Of the 58 runover fatalities, the majority (61%, 35 fatalities) were as a result of an unmanned piece of farm equipment. In this kind of injury event, the victim is runover by machinery he/she had left running or unblocked on a slope. Another 14 deaths were due to a fall where the operator was then subsequently run over. Bystanders accounted for 6 fatalities (10%). The remaining 3 fatalities, 5% of runovers involved a passenger.

71% of the runover fatalities involved a tractor (41 deaths). Another 9% (5 fatalities) involved an all-terrain vehicle.

## ANIMAL-RELATED FATALITIES, 2006–2015

---



Of the 35 animal-related deaths, 51% (18 fatalities) involved a horse and 49% (17 fatalities) involved a cow/cattle.

Of the 18 fatalities involving a horse, in 6 of the fatalities, the deceased was performing agriculture-related tasks at the time of the incident. In another 4 fatalities, the deceased was a recreational horse-rider on the farm. In 8 fatalities there was insufficient documentation to determine if agriculture-related tasks were being performed at the time of the incident.

## PINNED/STRUCK BY MACHINERY FATALITIES, 2006–2015

---

Of the 26 fatalities from being pinned/struck by a machine in 35% (9 fatalities) the deceased was struck by a heavy machine component not under power at the time of the incident.

## STRUCK BY NON-MACHINERY FATALITIES, 2006–2015

---

Of the 24 fatalities from being struck by a non-machine, for half of the fatalities (12 fatalities), the deceased was struck by a tree/log/branch.



**CASA | ACSA**

Canadian Agricultural Injury Reporting  
Surveillance des blessures agricoles au Canada

## CONNECT WITH US

Canadian Agricultural Injury Reporting  
3325 – C Pembina Highway  
Winnipeg, MB R3V 0A2

**Phone:** 1-877-452-2272 or (204) 452-2272

**Fax:** 1-877-261-5004 or (204) 261-5004

**Email:** [cair-sbac@casa-acsa.ca](mailto:cair-sbac@casa-acsa.ca)

**Web:** [cair-sbac.ca](http://cair-sbac.ca)

**Facebook:** Canadian Agricultural Safety Association

**Twitter:** @planfarmsafety

**Instagram:** @planfarmsafety

**YouTube:** planfarmsafety / jemengage